

I hereby certify that this plan, specification, or report was prepared by me or under my direct supervision and that I am a duly Licensed Landscape Architect under the laws of the State of Minnesota.

PRINT NAME: STEVEN J. MCHENRY

SIGNATURE: _____

DATE: 06/02/2022

LICENSE #: 46710

REVISIONS

NO.	DATE	BY	CHKD	APPR

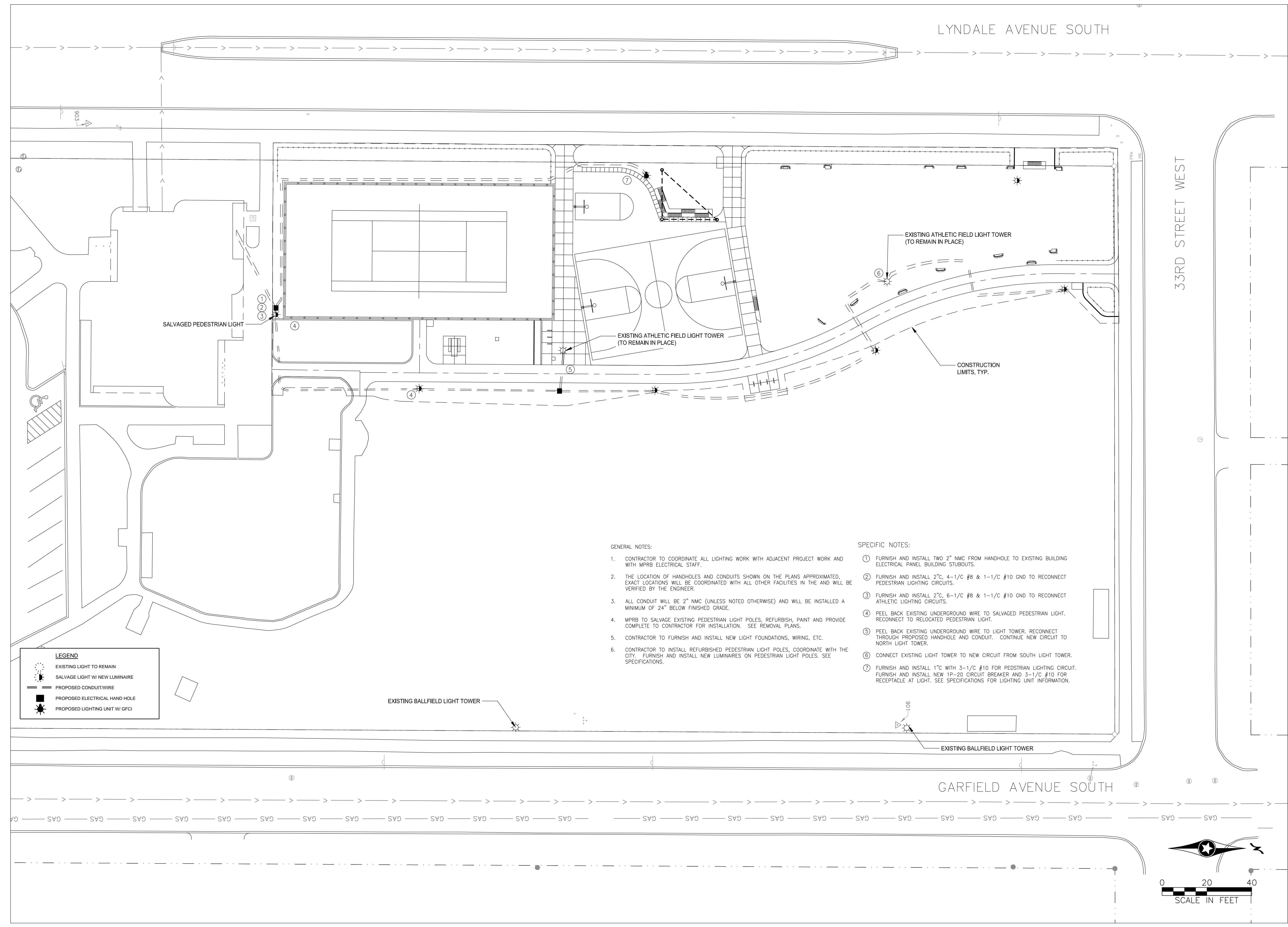
DRAWN BY: A. EMERSON

DESIGNED BY: A. EMERSON

CHECKED BY: S. MCHENRY

COMM. NO. _____

**PAINTER PARK
PHASE 1 IMPROVEMENTS
OVERALL ELECTRICAL PLAN**



LYNDALE AVENUE SOUTH

33RD STREET WEST

GARFIELD AVENUE SOUTH

SALVAGED PEDESTRIAN LIGHT

EXISTING ATHLETIC FIELD LIGHT TOWER
(TO REMAIN IN PLACE)

EXISTING ATHLETIC FIELD LIGHT TOWER
(TO REMAIN IN PLACE)

CONSTRUCTION
LIMITS, TYP.

EXISTING BALLFIELD LIGHT TOWER

EXISTING BALLFIELD LIGHT TOWER

GENERAL NOTES:

- CONTRACTOR TO COORDINATE ALL LIGHTING WORK WITH ADJACENT PROJECT WORK AND WITH MPRB ELECTRICAL STAFF.
- THE LOCATION OF HANDHOLES AND CONDUITS SHOWN ON THE PLANS APPROXIMATED. EXACT LOCATIONS WILL BE COORDINATED WITH ALL OTHER FACILITIES IN THE AND WILL BE VERIFIED BY THE ENGINEER.
- ALL CONDUIT WILL BE 2" NMC (UNLESS NOTED OTHERWISE) AND WILL BE INSTALLED A MINIMUM OF 24" BELOW FINISHED GRADE.
- MPRB TO SALVAGE EXISTING PEDESTRIAN LIGHT POLES, REFURBISH, PAINT AND PROVIDE COMPLETE TO CONTRACTOR FOR INSTALLATION. SEE REMOVAL PLANS.
- CONTRACTOR TO FURNISH AND INSTALL NEW LIGHT FOUNDATIONS, WIRING, ETC.
- CONTRACTOR TO INSTALL REFURBISHED PEDESTRIAN LIGHT POLES, COORDINATE WITH THE CITY. FURNISH AND INSTALL NEW LUMINAIRES ON PEDESTRIAN LIGHT POLES. SEE SPECIFICATIONS.

SPECIFIC NOTES:

- FURNISH AND INSTALL TWO 2" NMC FROM HANDHOLE TO EXISTING BUILDING ELECTRICAL PANEL BUILDING STUBOUTS.
- FURNISH AND INSTALL 2"C, 4-1/C #8 & 1-1/C #10 GND TO RECONNECT PEDESTRIAN LIGHTING CIRCUITS.
- FURNISH AND INSTALL 2"C, 6-1/C #8 & 1-1/C #10 GND TO RECONNECT ATHLETIC LIGHTING CIRCUITS.
- PEEL BACK EXISTING UNDERGROUND WIRE TO SALVAGED PEDESTRIAN LIGHT. RECONNECT TO RELOCATED PEDESTRIAN LIGHT.
- PEEL BACK EXISTING UNDERGROUND WIRE TO LIGHT TOWER. RECONNECT THROUGH PROPOSED HANDHOLE AND CONDUIT. CONTINUE NEW CIRCUIT TO NORTH LIGHT TOWER.
- CONNECT EXISTING LIGHT TOWER TO NEW CIRCUIT FROM SOUTH LIGHT TOWER.
- FURNISH AND INSTALL 1"C WITH 3-1/C #10 FOR PEDSTRIAN LIGHTING CIRCUIT. FURNISH AND INSTALL NEW 1P-20 CIRCUIT BREAKER AND 3-1/C #10 FOR RECEPTACLE AT LIGHT. SEE SPECIFICATIONS FOR LIGHTING UNIT INFORMATION.

LEGEND

	EXISTING LIGHT TO REMAIN
	SALVAGE LIGHT W/ NEW LUMINAIRE
	PROPOSED CONDUIT/WIRE
	PROPOSED ELECTRICAL HAND HOLE
	PROPOSED LIGHTING UNIT W/ GFCI

