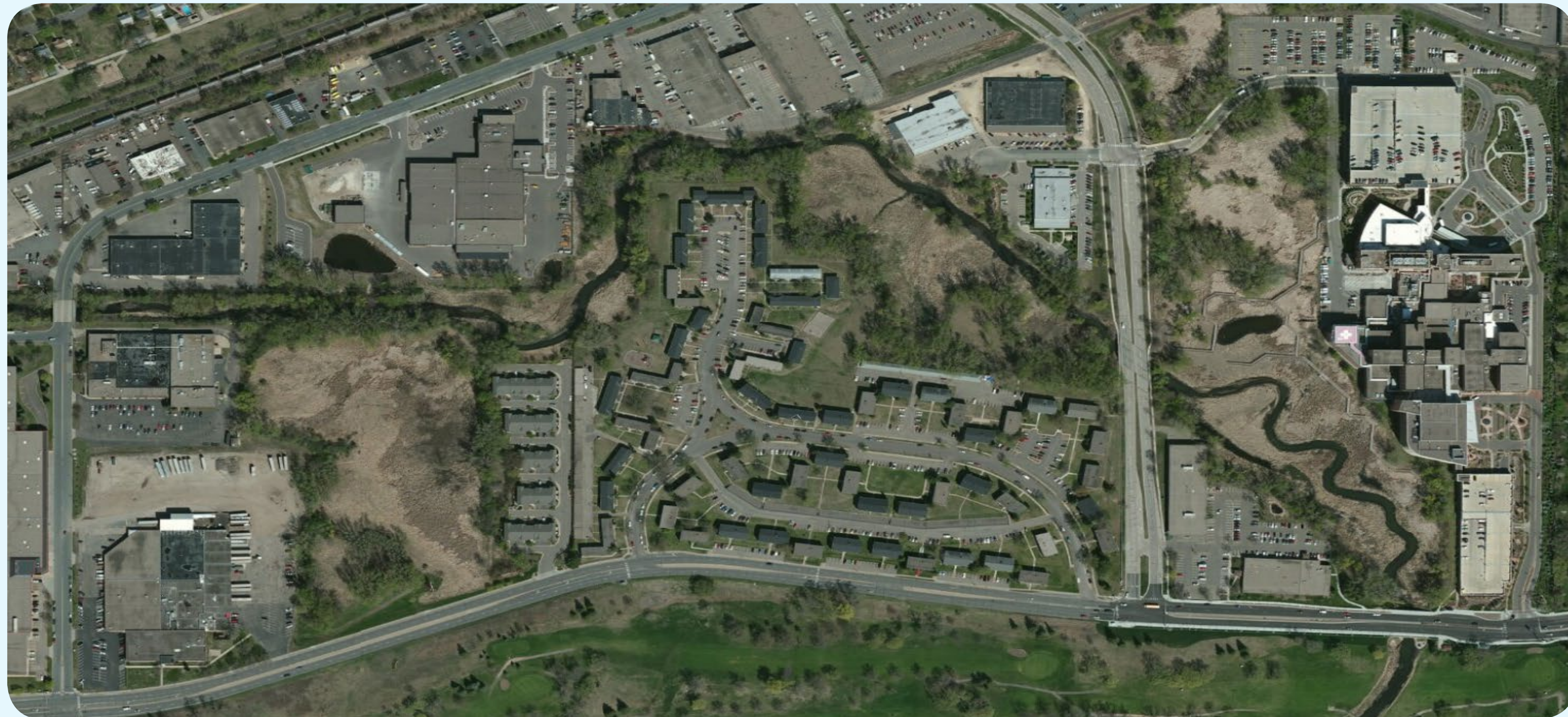


Minnehaha Creek Reach 20 Restoration

Before



After



Details

- Constructed winter 2012-2013
- Extends creek restoration at Methodist Hospital (2009) upstream from Louisiana Avenue to Meadowbrook Road in St. Louis Park
- Returns creek to a **natural shape** and creates additional 1,600 feet of stream

Water Quality Benefits

- Treats more than 80 acres of **previously-untreated polluted runoff**
- **Improves flood control** by reconnecting creek to its historic floodplains
- **Prevents erosion** by slowing down the water
- Creates fish and wildlife **habitat**

Community Benefits

- Adds 27 acres of **accessible green space**
- Provides creek access and educational opportunities via **trails and boardwalk**
- **Helps cities meet pollution reduction requirements** for Minnehaha Creek and Lake Hiawatha
- Enhanced recreational enjoyment with **new canoe launches**
- Part of **larger effort** to restore this urbanized section of Minnehaha Creek:
 - Creek restoration at Methodist Hospital
 - Blake Road warehouse property restoration
 - Cottageville Park expansion
 - Improvements at Target and Knollwood Mall
 - Integrating with Southwest LRT line