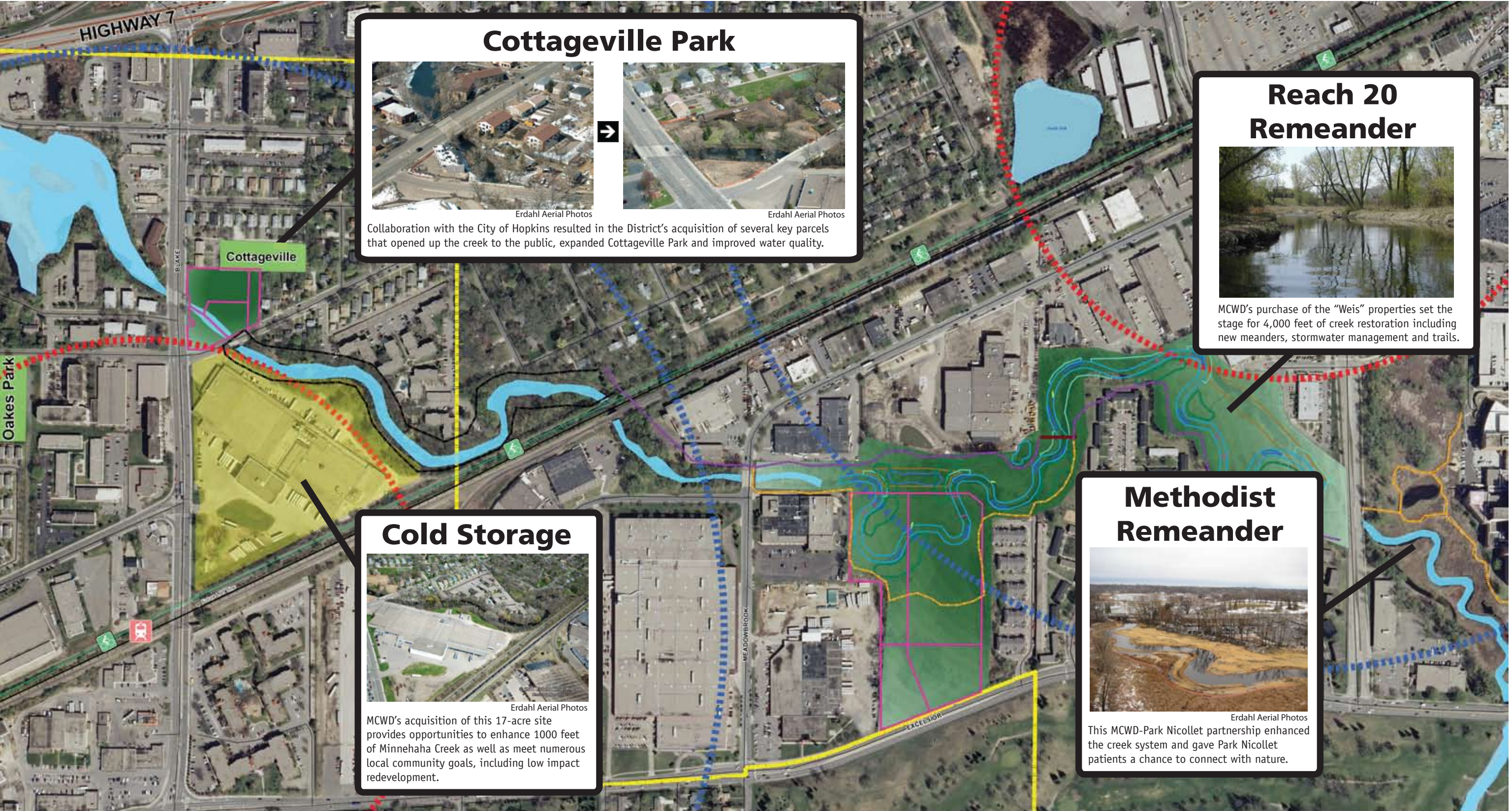


Minnehaha Creek Restoration Project



Cottageville Park




Erdahl Aerial Photos Erdahl Aerial Photos

Collaboration with the City of Hopkins resulted in the District's acquisition of several key parcels that opened up the creek to the public, expanded Cottageville Park and improved water quality.

Reach 20 Remeander



MCWD's purchase of the "Weis" properties set the stage for 4,000 feet of creek restoration including new meanders, stormwater management and trails.

Cold Storage



Erdahl Aerial Photos

MCWD's acquisition of this 17-acre site provides opportunities to enhance 1000 feet of Minnehaha Creek as well as meet numerous local community goals, including low impact redevelopment.

Methodist Remeander



Erdahl Aerial Photos

This MCWD-Park Nicollet partnership enhanced the creek system and gave Park Nicollet patients a chance to connect with nature.