

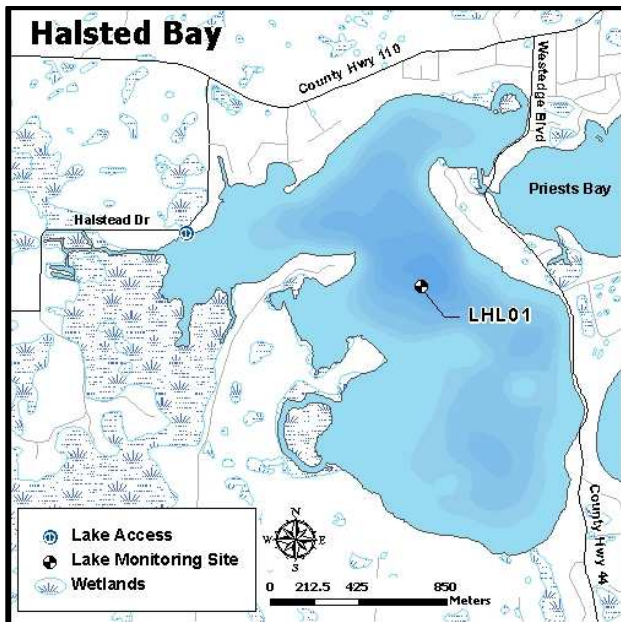
## Halsted Bay (DNR ID27-0133-09)

MCWD Site ID: LHL01

Sampling Location GPS Coordinates: 44.9149N, -93.634W

Surface Area (acres): 544

Max. Depth (ft): 36



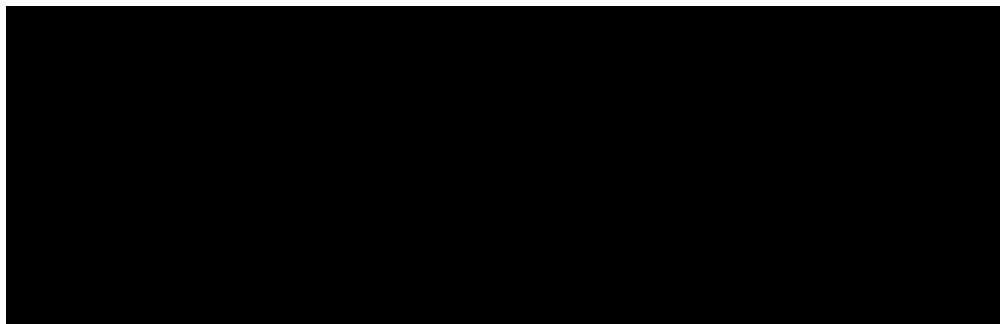
### Site Information

Lake Minnetonka is a class 2B lake protected for aquatic life and recreation. Halsted Bay is located in the city of Minnetrista on the farthest west end of Lake Minnetonka. The lake has been connected to Lake Minnetonka by channel and is adjacent to Priests Bay. Water quality information is available beginning in 1996. MCWD staff have been monitoring the lake on a bi-weekly basis from the time of ice out (April) to the time of fall mixing (mid-October) since 2006. A YSI multi-probe meter was used to measure dissolved oxygen (DO), temperature ( $^{\circ}\text{C}$ ), pH, and specific conductivity ( $\mu\text{S}/\text{cm}$ ) from the water surface and at each meter depth to the bottom. Water samples were collected at 1 meter below the water surface as well as one meter from the bottom. Surface and bottom sample parameters analyzed included total phosphorus (TP), total dissolved phosphorus (TDP), soluble reduced phosphorus (SRP), total nitrogen (TN), total dissolved nitrogen (TDN),  $\text{NO}_3/\text{NO}_2$ , and ammonia ( $\text{NH}_4$ ). Chlorophyll-*a* surface concentrations were also analyzed and measurements of Secchi disc depth were recorded.

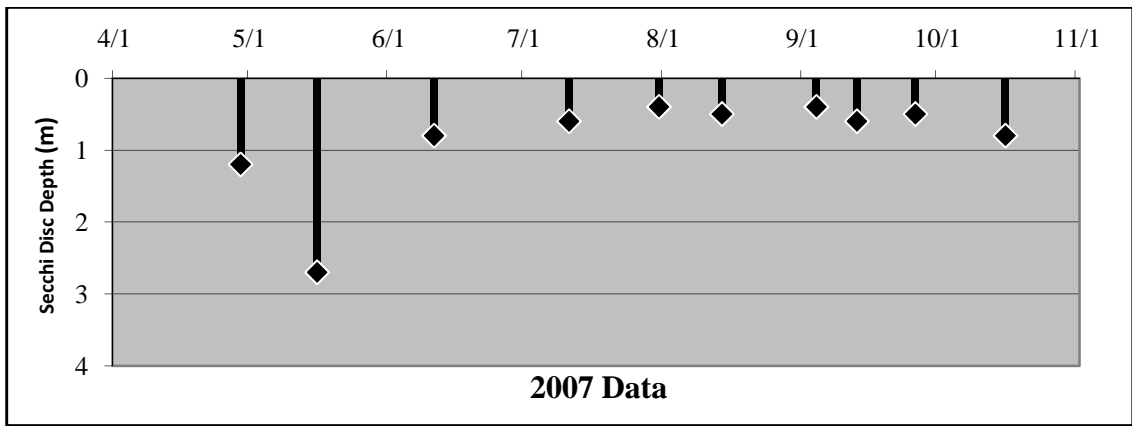
## 2007 Data Summary

- Secchi disc depth was at or below the standard (1.2 m) for all measurements except one taken in mid-May.
- Chlorophyll-*a* concentrations increased throughout the season, peaking in early September. All but one sample taken in mid-May had concentrations above the standard (15 ppb).
- TP concentrations increased through much of the season with a decline in the month of July. All samples taken in 2007 had concentrations above the standard (40 ppb).

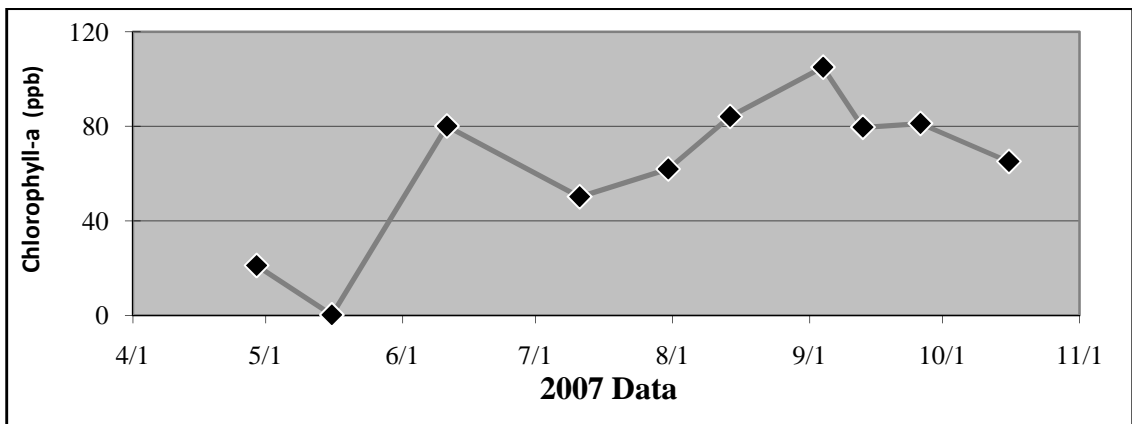
**Table 2.8 Halsted Bay 2007 Summary**



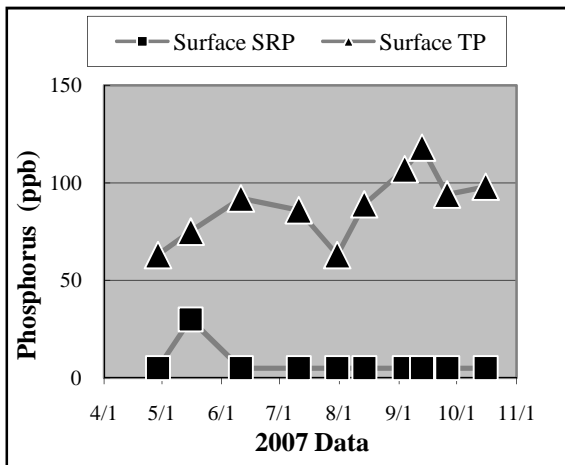
*\*excludes May Data*



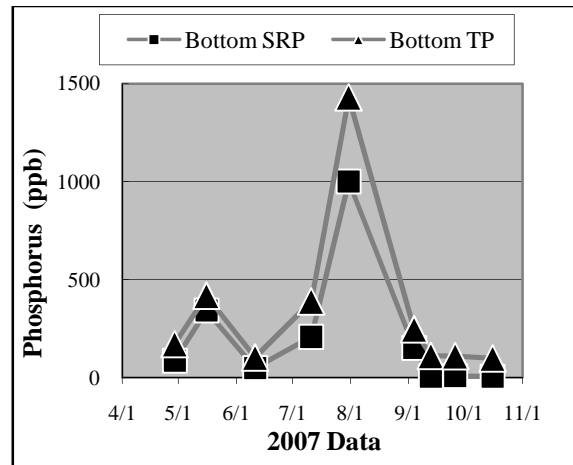
a.



b.

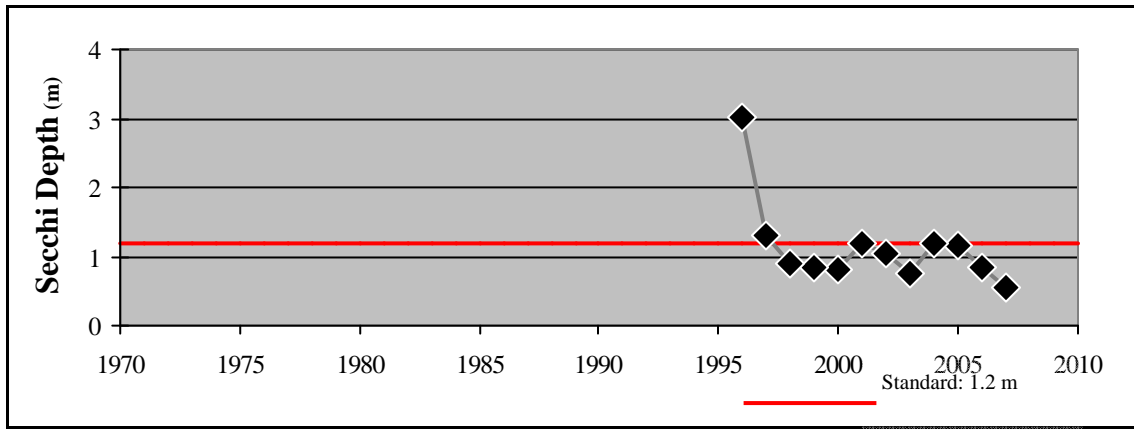


c.

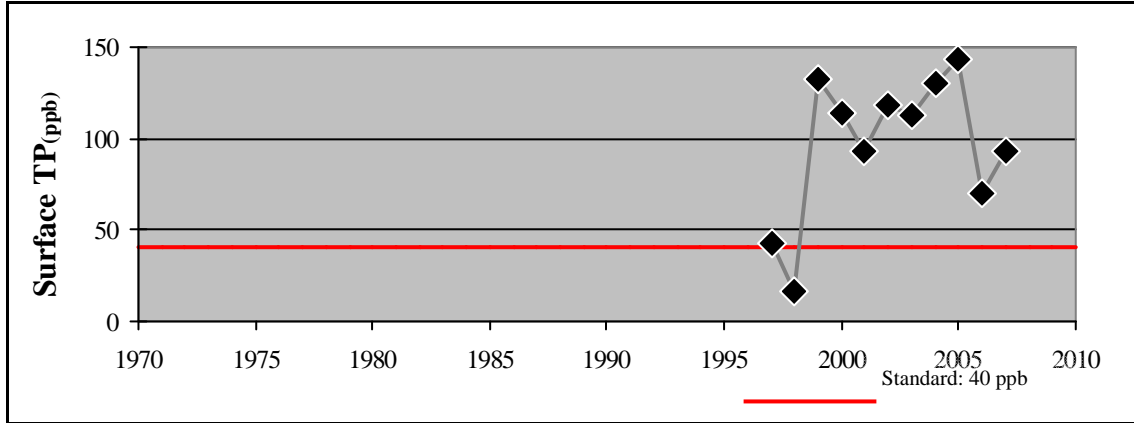


d.

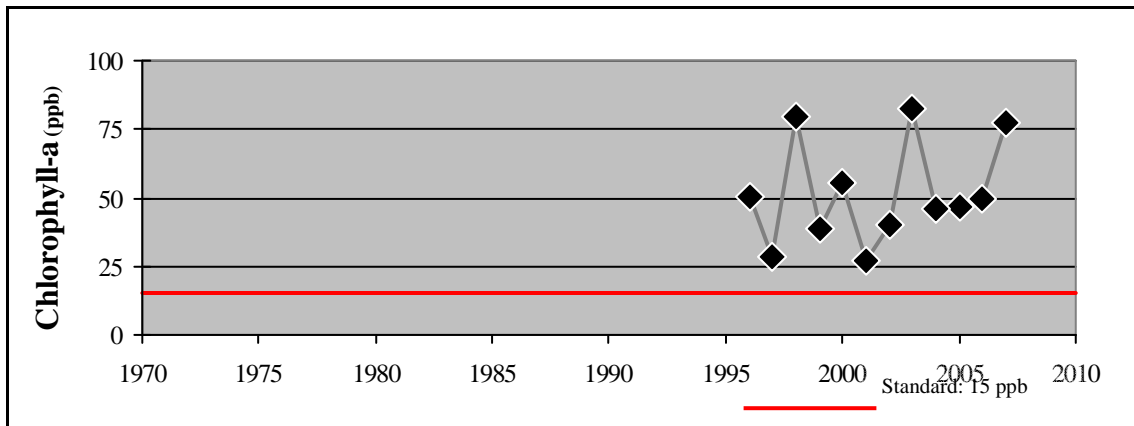
**Figure 2.9 (a-d) Halsted Bay  
2007 Grade: D**



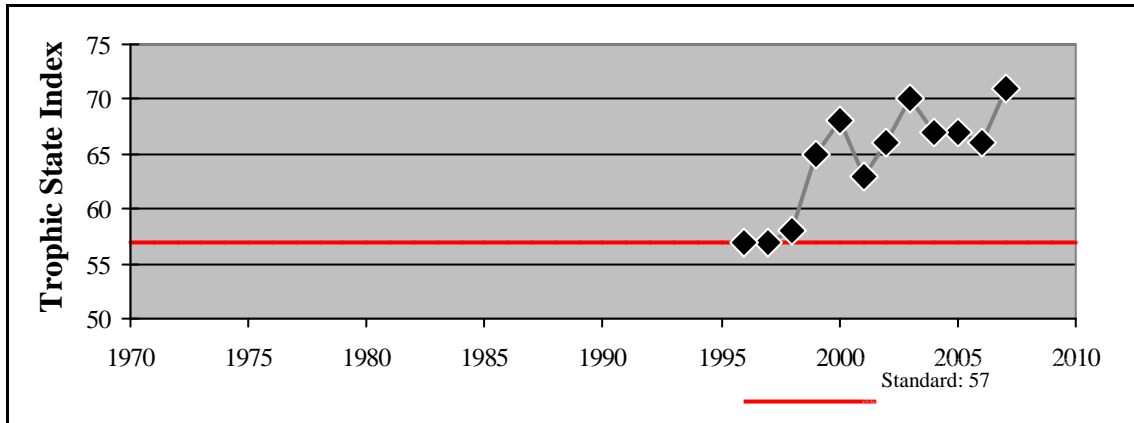
e.



f.



g.



h.

**Figure 2.9 (e - h) Halsted Bay - Summer Mean Values**