

Cedar Lake (DNR ID 27-0039-00)

MCWD Site ID: LCE01

Surface Area (acres): 168

Max. Depth (ft): 51

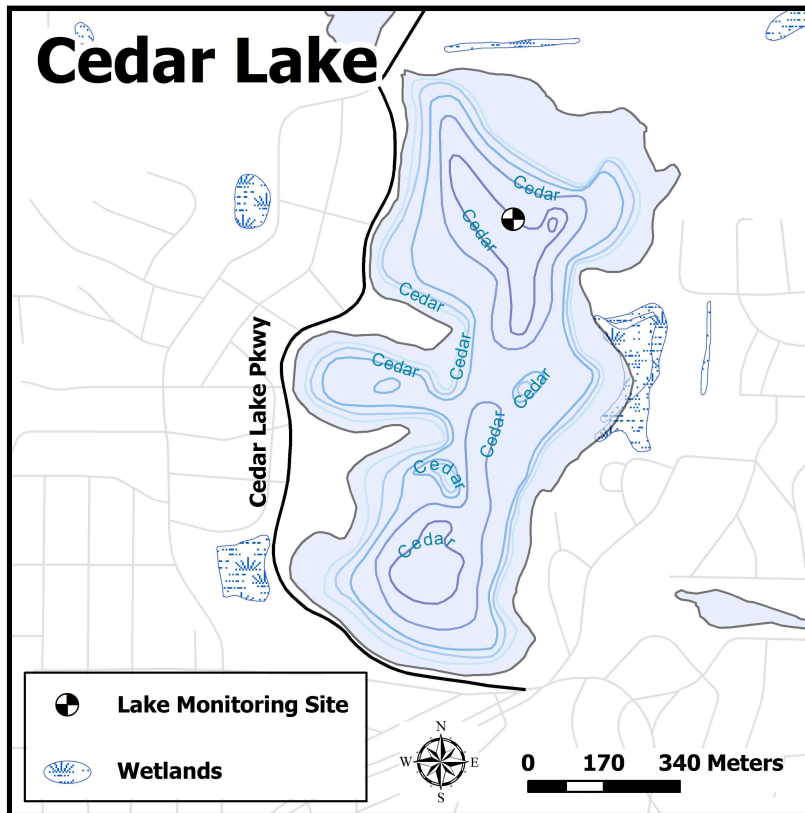


Figure 1.4 Cedar Lake

Site Information

Cedar Lake is a class 2B dimictic, glacial kettle lake in the Chain of Lakes. It is protected for aquatic life and recreation and has water quality data going back to 1979. Currently Minneapolis Park and Recreation Board staff monitor the lake on a bi-weekly basis and send MCWD the raw data each fall.

The lake was named for the red cedar found along its shoreline. Some evidence exists that the lake may mix in some years during the late summer and then re-stratifies (Lee and Jontz, 1997). Dredging occurred between 1911 and 1917, and channels between Lake of the Isles and Brownie Lake were created in 1913 and 1917, respectively. The canal connecting Cedar Lake to Lake of the Isles caused a water elevation drop of six feet in Cedar. The lower water elevation changed the shape of the lake. The most noticeable

impact was the land connection of Louis Island; making it a peninsula on the west side of the lake (MPRB, 2006).

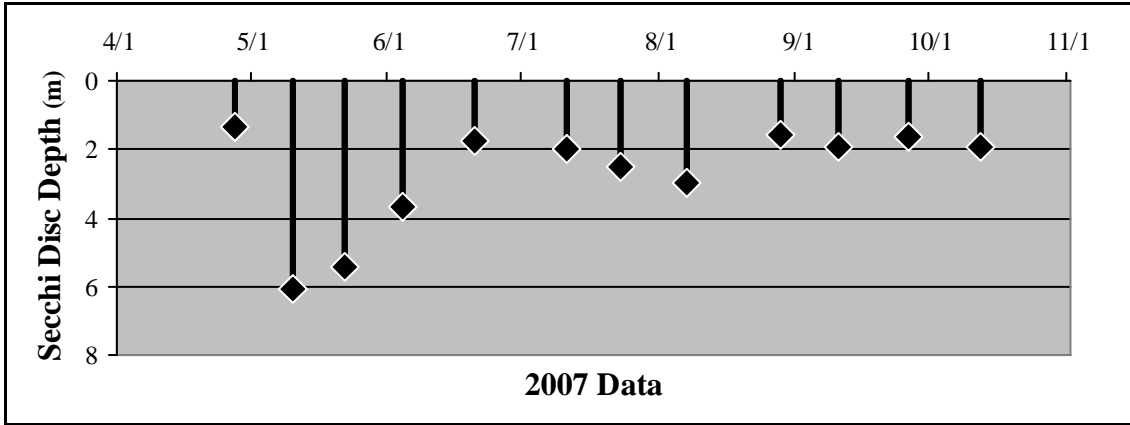
2007 Data Summary

- Secchi disc depth was deeper than the standard (1.2 m) for all of the season. May through June saw measurements decline in depth before stabilizing for the remainder of the summer.
- Chlorophyll-*a* concentrations increased through most of the season with all samples being under the standard (15 ppb).
- TP concentrations were well above the standard (40 ppb) for the season. Peaking at 4 times the standard concentration, pre-July was the only period that saw levels close to the standard.

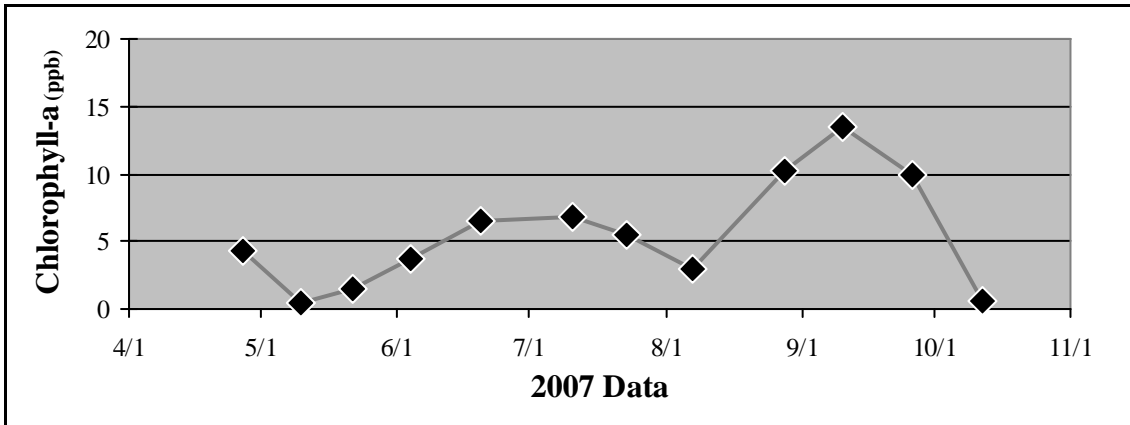
Table 1.2 Cedar Lake 2007 Summary

2007 Summer (May-September) Water Quality Summary				
Parameter	Range	Mean	Grade	TSI value *
Secchi Depth (m)	1.6 - 6.1	2.3	B	48
Surface TP (µg/L)	16 - 27	22.9	B	49
Chlorophyll- <i>a</i> (µg/L)	0.5 - 13.5	7.4	A	50
		Overall Score	B+	49

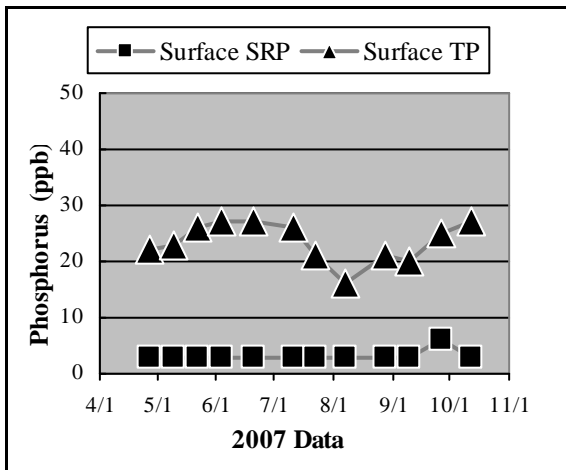
**excludes May Data*



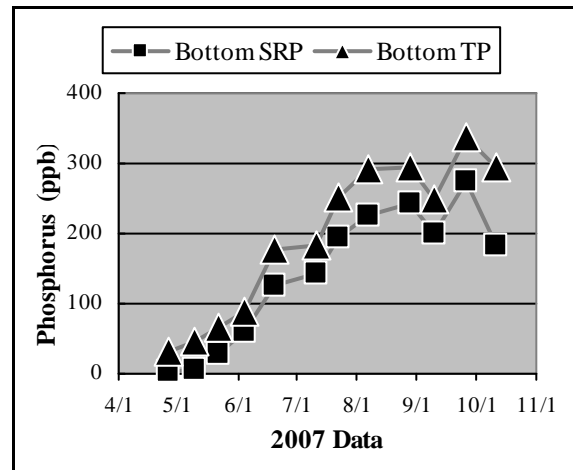
a.



b.

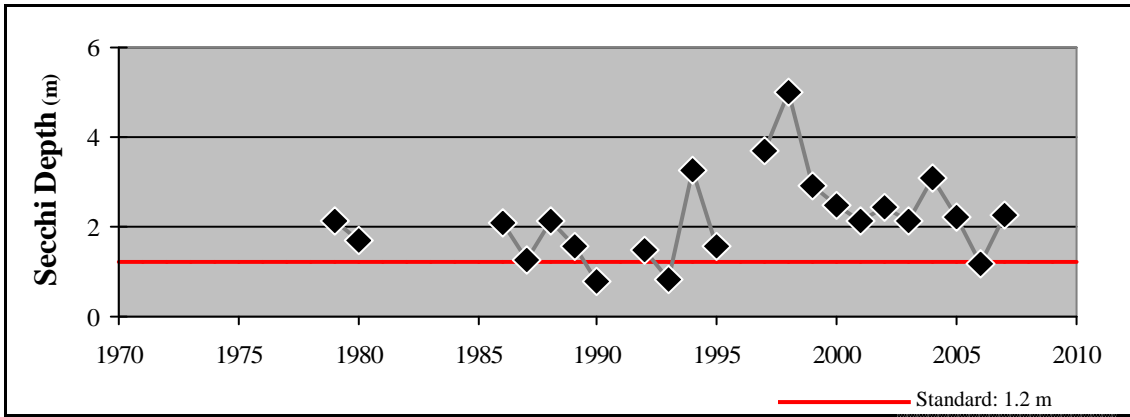


c.

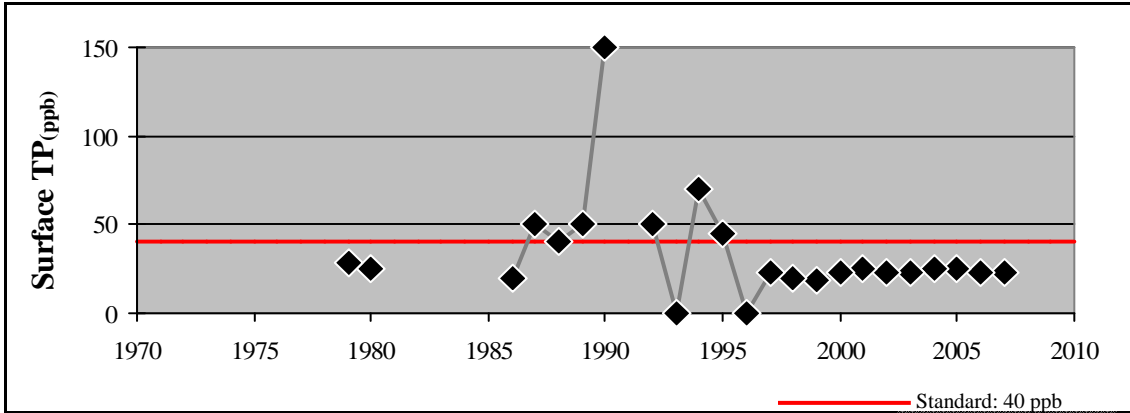


d.

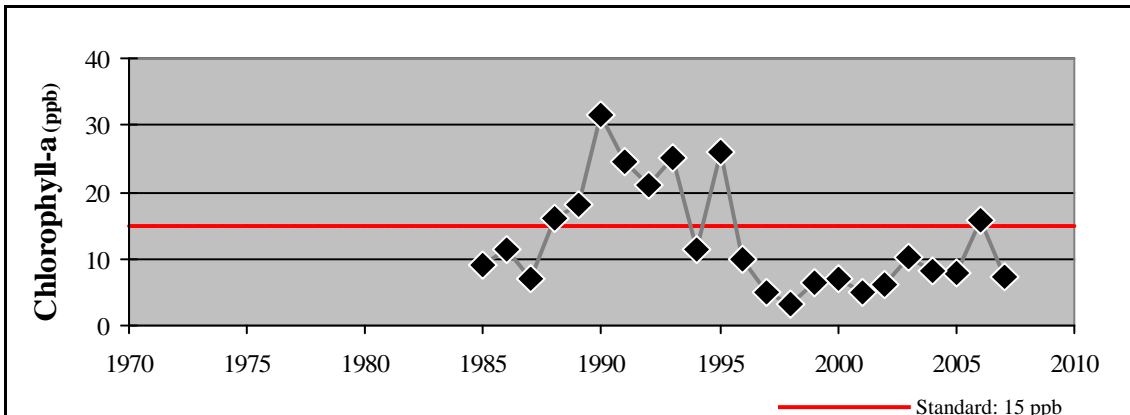
**Figure 1.5 (a-d) Cedar Lake
2007 Grade: B+**



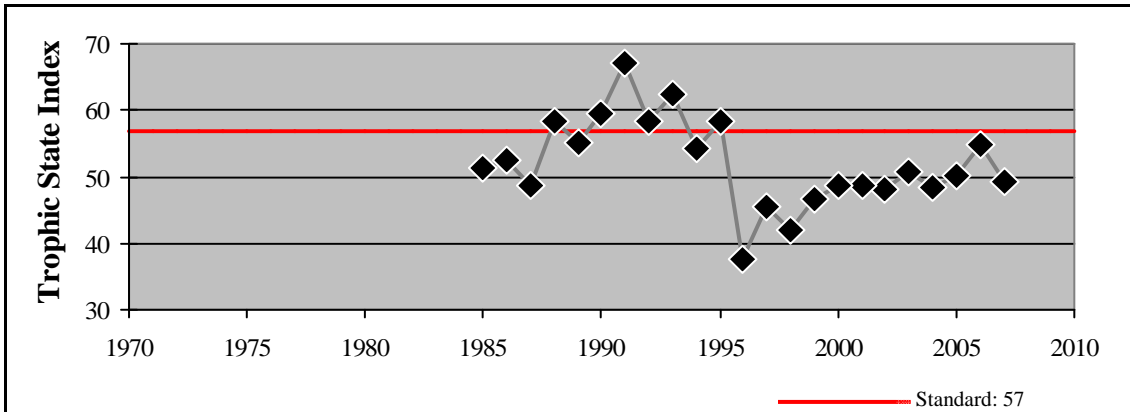
e.



f.



g.



h.

Figure 1.5 (e - h) Cedar Lake - Summer Mean Values