

Lake Calhoun (DNR ID 27-0031-00)

MCWD Site ID: LCA01

Surface Area (acres): 415

Max. Depth (ft): 90

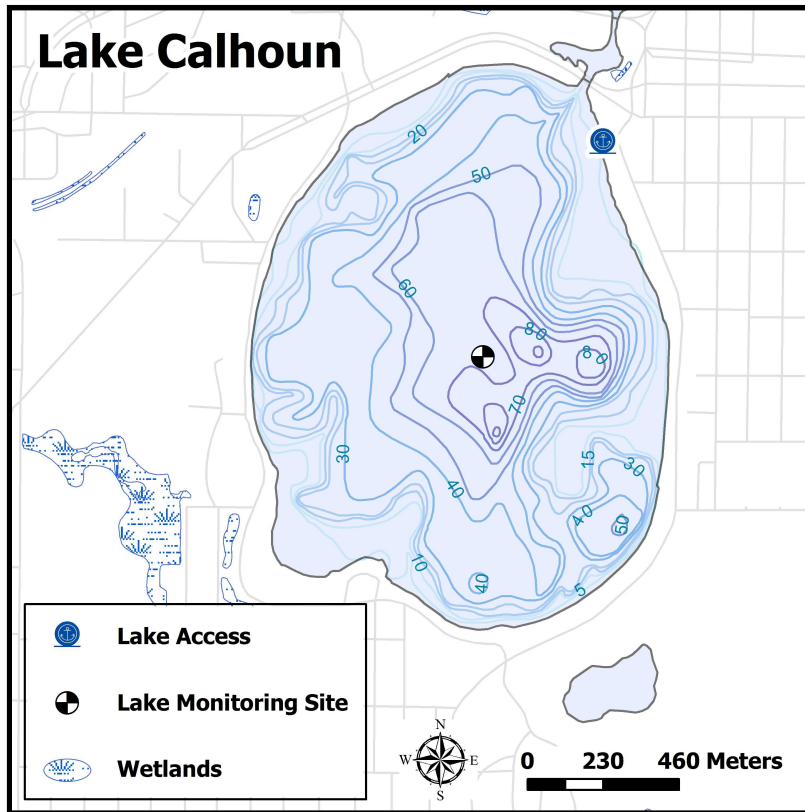


Figure 1.2 Lake Calhoun

Site Information

Lake Calhoun is the largest lake in the Minneapolis Chain of Lakes. It receives water from the upstream lake, Lake of the Isles, and discharges water to Lake Harriet. Lake Calhoun is a deep, dimictic, glacial kettle lake that generally remains stratified until late October.

Previously known as Lake of the Loons, the lake was renamed after John Caldwell Calhoun. While Calhoun was Secretary of War under President Monroe he established a military post at Fort Snelling. Similar to other lakes in the Minneapolis Chain of Lakes, Lake Calhoun was dredged and surrounding wetland areas were filled (~35 acres) in the early part of the 20th century. Nearly 1.5 million cubic yards of soil were placed on the shoreline between 1911 and 1924 (MPRB, 2006).

Water Quality Data is available back to 1979. Currently Minneapolis Park and Recreation Board staff monitor the lake on a bi-weekly basis and send MCWD the raw data each fall.

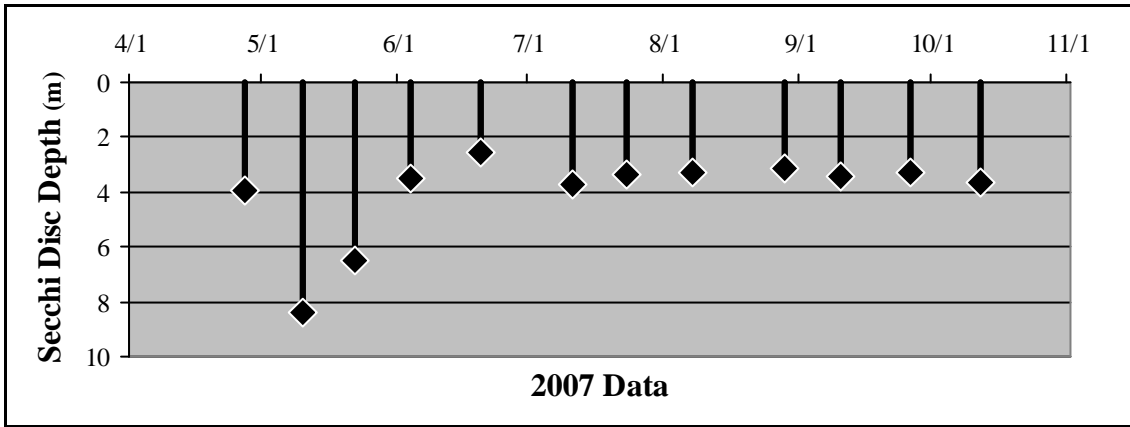
2007 Data Summary

- Secchi Depth stayed above the standard (1.2 m) throughout the season, with exceptionally high levels during the month of May.
- Chlorophyll-*a* concentrations were less than a third of the standard (15 ppb) throughout the season.
- Other than an acute spike at the beginning of June, TP concentrations stayed below half the standard (40 ppb) throughout the season.

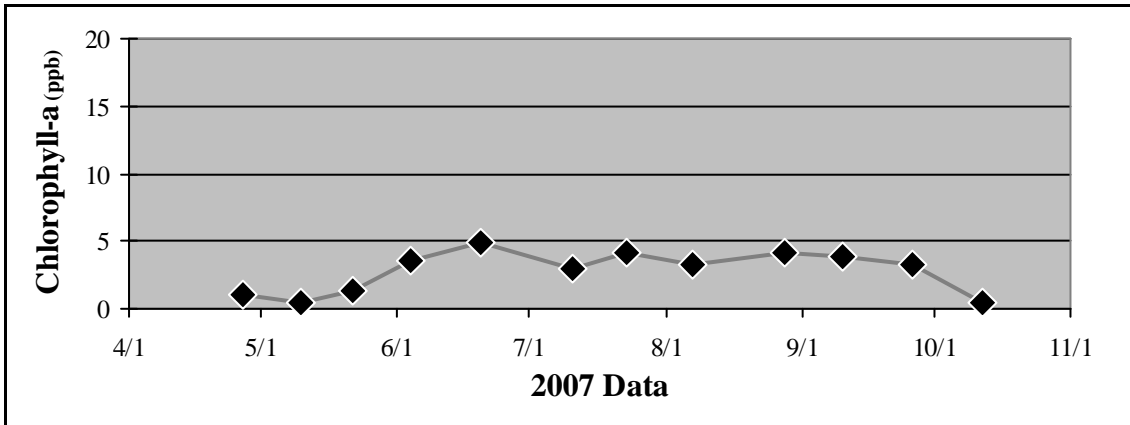
Table 1.1 Lake Calhoun 2007 Summary

2007 Summer (May-September) Water Quality Summary				
Parameter	Range	Mean	Grade	TSI value *
Secchi Depth (m)	3.2 - 8.4	3.3	A	43
Surface TP (µg/L)	13 - 160	33.8	B	55
Chlorophyll- <i>a</i> (µg/L)	0.5 - 4.9	3.8	A	44
		Overall Score	A-	47

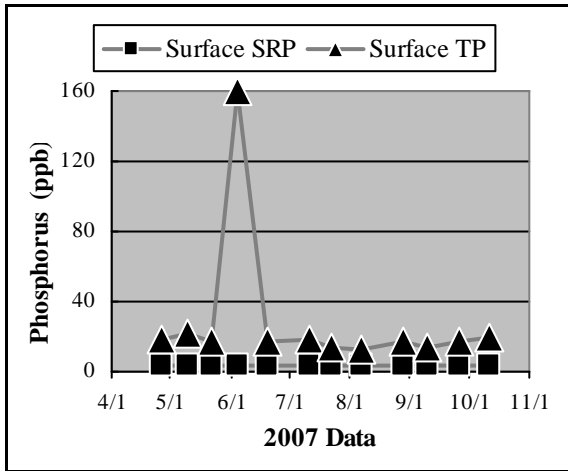
**excludes May Data*



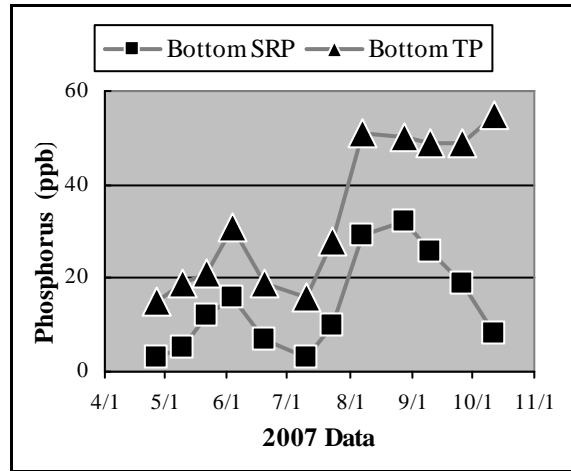
a.



b.

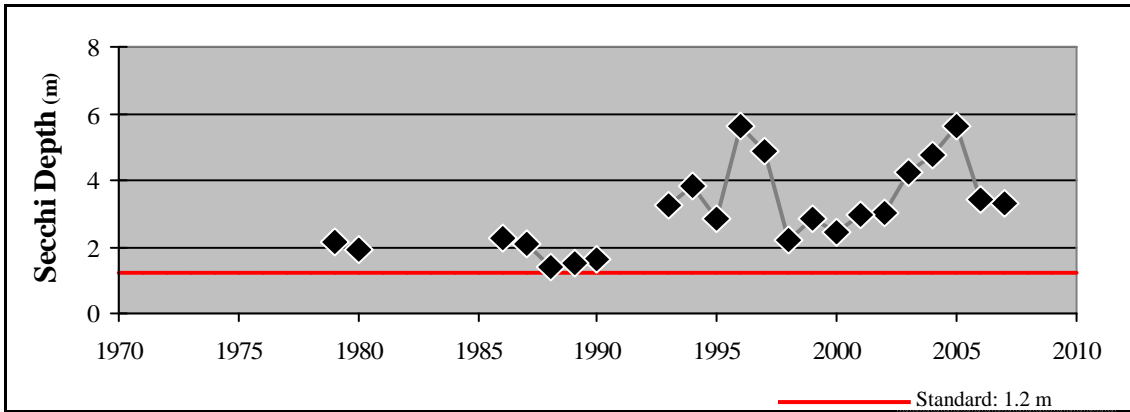


c.

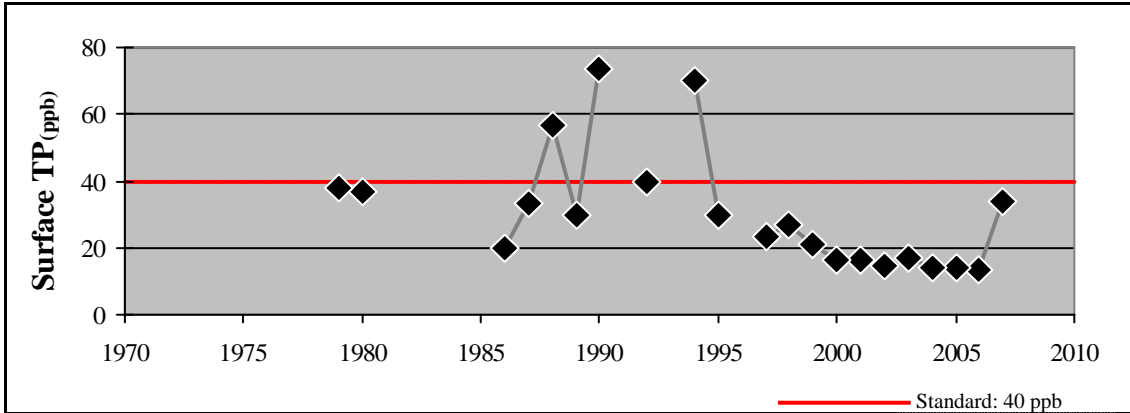


d.

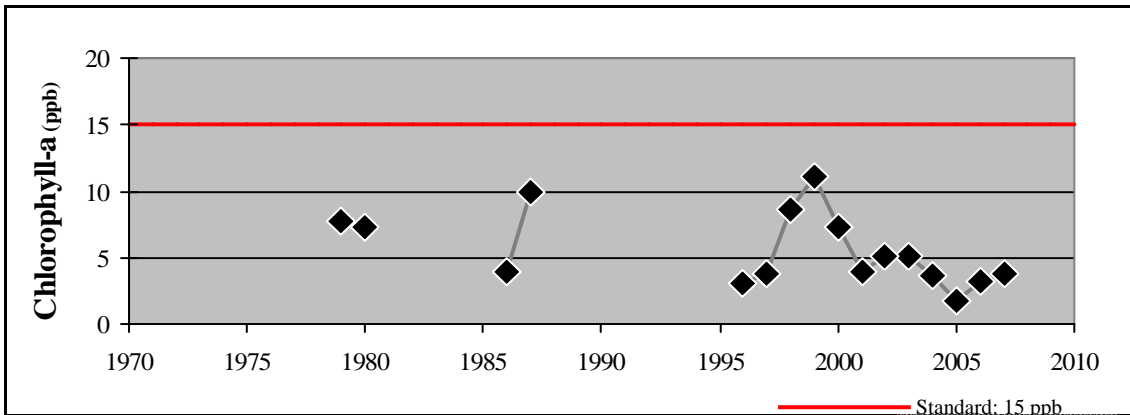
**Figure 1.3 (a-d) Lake Calhoun
2007 Grade: A-**



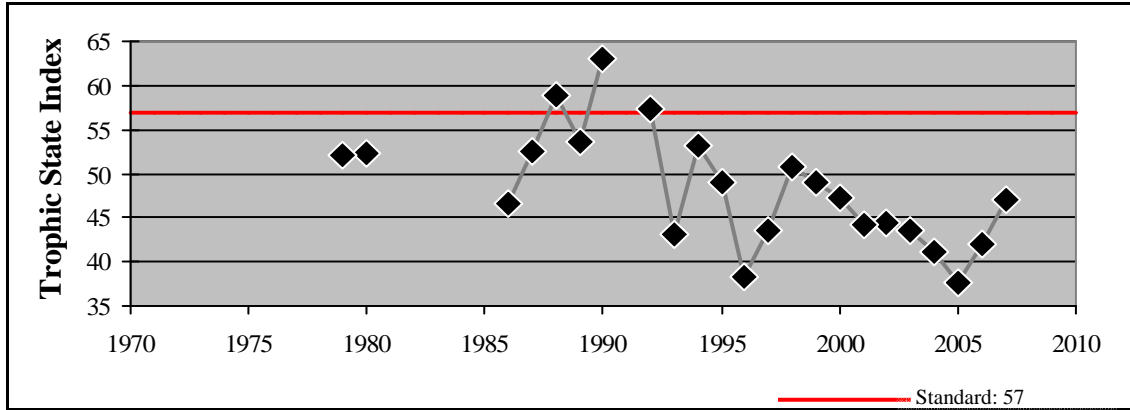
e.



f.



g.



h.

Figure 1.3 (e - h) Lake Calhoun - Summer Mean Values